

TRENDING NOW: MODERN CHECKS, NEON BRIGHTS & BLUES YOU'LL LOVE

HouseBeautiful

MARCH 2022

MODERN LIVING / AFFORDABLE STYLE

HOW TO... DECORATE WITH COLOUR

New ways with paint
(that you didn't know you
needed to know about)

FEELGOOD SHADES
HOW THE RIGHT HUE
CAN CHANGE YOUR LIFE

**FIND YOUR
PERFECT SOFA**
...AND ARMCHAIRS,
STOOLS AND
OTTOMANS!

EXCLUSIVE OFFER

20% OFF*
COLOUR EXPERT
SOPHIE ROBINSON'S
ONLINE COURSES

BIG SPRING UPDATE

- * 225 DECORATING IDEAS
- * JOBS TO DO NOW TO GET YOUR GARDEN READY
- * 40 STYLISH BUYS FOR UNDER £40

48 pages of
**REAL
HOUSES**
STYLE SECRETS
TO STEAL FROM
INSPIRING HOMES

*T&Cs APPLY

Bold new look

GIVE YOUR HOME A DRAMATIC MAKEOVER



9 770955 353384

housebeautiful.com/uk £4.99

Amazing
makeovers

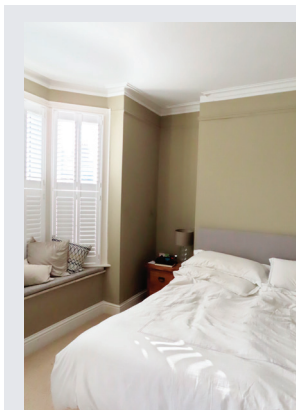
'A tired bedroom has become the stuff of dreams'

One couple's dowdy bedroom has been given a glamorous upgrade

WORDS SEÁN O'CONNELL | PHOTOGRAPHY VERONICA RODRIGUEZ



The owners of a Victorian terrace home in south London commissioned Emma of Emma Green Design to renovate the main bedroom. We asked her how she did it



Before

'As a main bedroom, the space didn't really make an impact or reflect any of the owners' individuality or warmth. It felt rather cold, unloved and cluttered.'



PLANTATION SHUTTERS

As well as providing privacy, this window treatment keeps the room dark at night and allows in natural light during the day

PINK ARMCHAIR

This makes an elegant statement in the corner of the room

What prompted this project?
I'd previously designed several other rooms for the clients – a couple with two small boys. After I refurbished their guest bedroom, they said it made the main bedroom look dowdy, so asked me if I would give this room a makeover too. After an initial briefing I drew up a few room layouts and a moodboard so they could choose the look they wanted.

Tell us about the process...

The only structural work required was repairing the roof to get rid of some damp that was coming through; apart from that it was all decorative. We began by extending the cornicing to run around the chimney breast, taking care to match it to the style of what was already there. I also design lighting, so I had downlights installed in the ceiling. Then it was on to the decor.

Did the owners ask for a particular look?

They wanted to create a calming sanctuary with a touch of boutique hotel chic, so I chose blush pink for the walls to create a gentle yet elegant

look. I then contrasted this by painting the window frames in black, which provides a masculine element. To add extra interest to the chimney breast wall, I opted for a vinyl wallpaper, which complements the pink yet has a reflective sheen that catches the light from the window. It also gives a touch of glamour to this all-important room.

Any designer tips or tricks?

To make the most of the available space, I designed and made a seat pad for the window ledge. Bay windows can often be dead space, but I've turned this spot into somewhere to sit and chat, and now my clients' children love to perch and read their books here in the morning. Also, the oversized mirror above the headboard helps to create an open, airy feel, as well as giving the illusion of a larger space, not to mention providing the wow factor as you enter the room.

And what do you think works best?

I was pleased with my recycling of the existing chest of drawers, which I painted and added new handles to – it was a money-saver too. **HB**

OUR SOURCEBOOK Off-Black estate **eggshell** (woodwork); Setting Plaster estate **emulsion** (walls); both farrow-ball.com. **Wallpaper**, vescom.com. Window **seat pad**, emmagreendesign.com. Ariella Chevron **bedside tables**, grahamandgreen.co.uk. Velvet Elowen **armchair**, anthropologie.com. Champignon **chandelier**; metal-framed oversized **wall mirror**; both westelm.co.uk

TOP TIP

'Be brave with design choices. The decision to have such a large, round mirror above the bed was bold but it's gorgeous and makes the room'

CIRCULAR MIRROR

As well as adding a feeling of light and space, this wow-factor feature is a fabulous focal point

CUSHIONS

Designed by Emma, they add comfort, colour and texture

WHAT IT COST

INTERIOR DESIGN £3,000
PAINT & WALLPAPER £1,400
FURNITURE (excluding bed) £2,000
BED £450
CARPET £1,150
ACCESSORIES £150
TOTAL £8,150