

# FREE METRO

TUESDAY, AUGUST 21, 2018

THE WORLD'S MOST POPULAR FREE NEWSPAPER

## DID RESCUED CRUISE BRIT JUMP SHIP?

'Row with lover before leap into sea'  
Page 7 »



INSIDE TWO GREAT SECTIONS PROPERTY + HOME LONDON'S BEST-READ GUIDE FOR HOUSE BUYERS AND OWNERS

# MELTDOWN AT GATWICK

FLIGHTS ARE MISSED AS SCREENS GO WRONG ■ STAFF WRITE DEPARTURES ON WHITEBOARDS



Plane B: Workers adopt basic approach

HOLIDAYMAKERS missed flights at Britain's second-busiest airport during a 12-hour IT meltdown yesterday.

Staff at packed Gatwick had to resort to scrawling departure information on whiteboards with marker pens after electronic display boards broke down.

Megaphones were also used to announce flight details but the airport admitted 'about 100 or so' travellers had failed to catch their planes.

A damaged fibre optic cable caused the screens to go wrong, with Gatwick laying the blame at the door of its IT

by AIDAN RADNEDGE

provider Vodafone. Ayla Herbert, from Penryn, Cornwall, was in a crowd in front of two whiteboards as she waited for her Flybe flight to Newquay.

'Each flight was written down - flight number, time of departure, the time when boarding would be announced and eventually the gate number,' the 26-year-old said.

'The crowd over the hours grew

Continued on Page 11 »



Gate expectations: A crowd gathers in departures REUTERS

PLUS



NOVICHOK VICTIM 'GOES BLIND'  
Page 2 »



KIRSTIE'S ROYAL CLANGER  
Page 3 »



PRUE'S WHO IN THE NEW BAKE OFF  
Page 9 »

## LIFE INSURANCE WITH UP TO 40% LOWER PREMIUMS WHEN YOU'RE ACTIVE

Our Wellness Optimiser gives you an upfront discount, plus rewards like a weekly Starbucks drink just for getting active.

vitalitylife.co.uk/premiumdiscount

Vitality LIFE INSURANCE



Lower? Does that mean I can reach it?

Positively different life insurance.

Wellness Optimiser is available for an additional monthly fee of £3.80 on any new VitalityLife plan. Minimum monthly premiums apply. The upfront discount that Wellness Optimiser offers only applies to your protection premiums. It does not apply to the Wellness Optimiser additional monthly fee. Members with Wellness Optimiser can earn Starbucks handcrafted drinks by regularly tracking their exercise. Excludes Venti-sized drinks and seasonal featured drinks. Calls may be recorded/monitored to help improve our customer service. Call charges may vary. For eligibility and further terms and conditions visit vitality.co.uk.



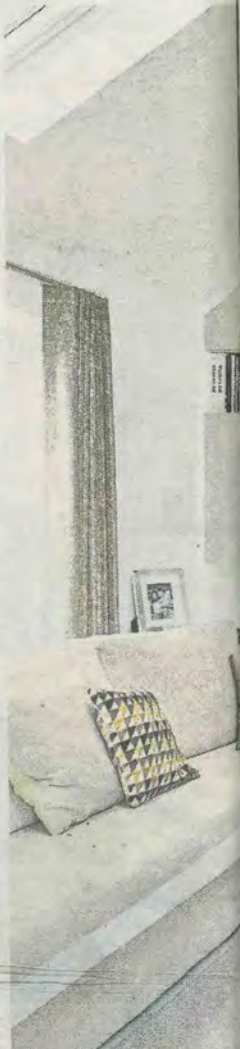
# CLEVER SOLUTIONS FOR AWKWARD SPACES

OLIVER STALLWOOD QUIZZES THE EXPERTS ON HOW TO MAKE PROBLEMATIC AREAS IN YOUR HOME SHINE



## 1 COLOUR WAYS

Cathryn Archer, head of Design Service at Laura Ashley, says: 'When working in an awkwardly shaped room, like one with sloping ceilings or different ceiling heights, a great tip is to unify the space by painting it all in one colour, including the ceiling. This way, none of the awkward shapes are highlighted. Matte paints are better as they don't show any blemishes or marks like silk finishes. Lighter colours would also work. We have a beautiful soft silver colour which would be perfect, or our cotton white is a lovely soft shade for those areas and would blend in as part of the ceiling colour if you wanted a clean look.' [lauraashley.com](http://lauraashley.com)



## 2 WORK IT

'In smaller urban spaces, storage has to work harder and often be multifunctional,' says Emma Green, a British Institute Of Interior Design member. 'In this master bedroom, I designed this bespoke storage solution to hide a collection of books behind movable sliding panels whilst keeping them accessible, display a collection of beautiful vases and also disguise a radiator.' [emmagreendesign.com](http://emmagreendesign.com)

# AYRTON

Replacing beautiful timber windows and doors, beautifully



10% OFF



## Window shopping

Call to claim 10% off orders placed by 31st August (Quote AYRM2108)  
[www.ayrtonbespoke.com](http://www.ayrtonbespoke.com)  
**020 8877 8920**  
[enquiries@ayrtonbespoke.com](mailto:enquiries@ayrtonbespoke.com)  
 406 Merton Road, Wandsworth, London SW18 5AD  
 61-63 Tottenham Lane, Crouch End, London N8 9BE



## 7 COSY UP

This neat nook was also conceived by designer Emma Green: 'This bespoke storage solution was created to be multifunctional and provide a reading nook for a young family, while allowing discreet storage for books and toys - and also as an area to display some of her clients' collection of original artworks.'



## 8 SHUT THAT DOOR

Christian Andersson-Wood has more great advice: 'In many properties, there are corners between doors that are not suitable for furniture at low level, but are an ideal place to add shelving. By adding a magazine rack or narrow bookshelf, this space, which is so often wasted, can also be put to good use.' [Christian's suggestion: wall-mounted, three-tier metal magazine rack. [notonthehighstreet.com](http://notonthehighstreet.com)]



## 9 GET FRAMED

'Distract the eye from awkward spaces,' says Matt Wetmore from Le Frame Shoppe ([leframeshoppe.com](http://leframeshoppe.com)). 'A great example is using an eclectic collection of shapes and subjects, grouped in gold and black frames, bringing warmth and character to an otherwise awkward space. Instead of being drawn to an angled half-wall, where the staircase climbs, the eye is drawn to this grouping, tying it into the rest of the home's decor. You can also make use of the wasted space on the turn on the stair by displaying a wicker basket or plant.'

## FAKE SNOOZE

The pitched ceiling in a bedroom can be tricky, so utilise the dead space by creating the illusion of a four-poster bed. Interior designer Emma Parkinson, who created this concept for Ikea ([ikea.com](http://ikea.com)), says: 'Sloped ceilings are often seen as a nuisance when designing a room, but placing the bed under the pitched area will create more space. It'll also allow you to make a budget-friendly version of a four-poster canopy bed by fastening a curtain wire, such as Ikea's Dignitet, to the wall where the slope begins and another on the ceiling at the end of the bed. Then drape a dreamy textile over both.'





**3 LOOK UP**  
 Karen Conn, furniture designer at Neville Johnson (nevillejohnson.co.uk), says: 'High walls are often left unused and empty, simply through people not knowing what to do with them. Incorporating bespoke fitted furniture can completely transform the space and will fully maximise areas considered as impractical. Bespoke cabinetry housed in the eaves creates an eye-catching way to both store and display your most treasured possessions. Integrated shelving and storage units create practical storage, while the desks and office ephemera can be hidden away using the custom pull-down cabinets, making the space truly multifunctional. Using on-trend shades and carefully considered lighting, the design is practical, yet unobtrusive.'



**4 DISPLAY GOALS**  
 Tom Teatum, co-director of design-focused co-living developer Noiascape (noiascape.com), says: 'To make use of an unused area, we've crossed the dado rail with a picture rail and reinterpreted it as an extension of the mantelpiece. By utilising this awkward space, we've created a display shelf for frames, objects and memories, proving that even walls can become a storage solution - especially useful for compact homes. Frames don't need to be affixed to the wall, allowing for a constant changing of prints and images without having to stick a nail in the wall.'



**5 WRITE ON**  
 David Norman, director of Furl (furl.co.uk), says: 'Unfortunately, not all rooms are perfect shapes. Wasted space, such as corners behind doors, can be particularly challenging. We've found a great solution with the Flatmate Desk. This allows any awkward nook or cranny to be transformed into a home office and folded neatly away when not in use. Using a tiny floor area, it fits tight spaces and has everything you need: storage space, an integrated power supply and even a glare-free light.'

**6 WHEEL HELP**  
 'The spandrel, that angled space underneath the foot of the staircase, is difficult to get to and things often gather dust and get lost there,' says architect Christian Andersson-Wood (anderssonwood.com). 'Insert a small triangular door to allow ease of access from the hallway and a custom-made box on wheels that can be easily pulled out for even better access. Custom-made drawers in the lower part of the staircase can also provide additional storage.'



**FROM 22 TO 27 AUGUST, GET £150 OFF FOR EVERY £1000 YOU SPEND.**  
 DISCOVER WHAT'S NEW IN OUR LIVING ROOM, DINING ROOM AND BEDROOM RANGES.  
 \*This offer is not cumulative with any other promotional offer.

FIND YOUR NEAREST STORE ON [NATUZZI.CO.UK](http://NATUZZI.CO.UK)

**NATUZZI**  
 ITALIA